

KLOMFAR



Bathroom accessories

Beauty begins in the bathroom



Contents

06	Collection
30	Finishes
38	Design
44	Manufacturing
52	About KLOMFAR
54	Contract
56	Product overview
68	Imprint

In a world that can sometimes feel rather complicated, we can at least try to surround ourselves with simple objects. Objects that connect with people through their materials and their essence. At KLOMFAR, everything from the design to production is carried out by hand, giving rise to objects with soul, intended to be long-term companions and made to last a lifetime.



KLOMFAR – a collection that celebrates minimalism and embodies the sleek elegance of basic geometric shapes and well thought out functionality. Pure design implemented with precision craftsmanship.



Free-standing or wall-mounted, the "Big Spender" gleams thanks to the clean lines of its design. Its angular and compact form is available in several finishes, while a proprietary system means it can be easily attached to the wall.



The “Big Spender Circle” is the round equivalent of the “Big Spender”, and its curves give the soap dispenser a softness and a smooth appearance. The wall-mounted model allows for easy handling and is also available in all finishes.



The “Stack it” soap dishes provide the perfect receptacle for a high-quality bar of soap, but also small precious items such as rings, necklaces and cufflinks.



The compact and slender "Grace" soap dispenser sits comfortably in the hand and exhibits a timeless, minimalist design. The robust metal provides the necessary stability and lends the dispenser a high-value feel.

The "Satin" soap dispenser is made out of satin-finish glass and chrome-plated brass. The matt surface of the container contrasts with the high-shine metallic pump and adds transparent elegance to the bathroom.



The double-sided vanity mirror boasts an elegant aesthetic and multiple functions. It is available in two sizes and offers a choice of 3x or 5x magnification. The height of the mirror is adjustable and the unit is particularly stable thanks to the heavy base.



Refined design and practical storage: two things that might sound like a contradiction are brought together in the exquisite “Round up” container made out of glass or brass with an opulent and refined lid. It isn’t just the ideal container for cosmetics and other small items, it’s also an elegant accessory.



The elegant "Round up" glass cup in clear or satin glass is the perfect complement to the "Round up" containers when it comes to stylish storage. The small "Round up" is ideal for storing toothbrushes and delicate cosmetics items, while the large cup provides plenty of space for hairbrushes, combs, etc.



The "Solid" waste bin offers the choice of being provided without a lid, with a lid or with a swing lid, and makes a statement in the bathroom thanks to its perfectly formed appearance. It is available in two sizes to ensure the discreet disposal of a wide range of items.



Pin scores with high quality and splendid looks as well as with its versatility. The bucket is not only available in various finishes, in four sizes and—depending on the model—with several cask covers, it also surprises with its multifunctional range of use. "Pin" can hold guest towels just as it is suitable for clippings and waste—paper and much more. Particularly in the bigger sizes "Pin" serves as a well vented laundry basket that discretely stores dirty linen until the next wash. Exclusively for the "Pin" with 47 cm height: An upholstered cover turns it into an inviting pouffe.



Beautiful design and high-quality finish: the "K-Box" tissue box allows for tissues to be stylishly stored. The container meets all demands whether it's free-standing or mounted on the wall.



The sleek toilet paper and brush stand with its almost monolithic form displays gentle curves and a pleasing feel. In its various, refined finishes, it is sure to be the perfect addition to any bathroom. The small base saves space but is extremely sturdy thanks to a steel insert.



Finishes that you can feel and that establish a connection with people, objects that communicate with us via tactile allure. Refinements that lend the product character and make it feel clean and hygienic.



Page 25:
"Big Spender" soap dispenser

Page 27:
"Big Spender Circle" soap dispenser
"Stack it" soap dishes
"Stand up" vanity mirror



"Pin" waste paper bin/guest towel container

"Pin" waste paper bin/guest towel basket with swing lid

"Pin" bathroom stool/laundry basket with seat lid



"Brush up" toilet brush set
"Solid" waste paper bin with swing lid
"Round up" satin glass container with lid



"Brush up" toilet brush set
"Big Spender Circle" soap dispenser
"Round up" satin glass container with lid
"Pin" waste paper bin/guest towel basket with swing lid



"Stack it" soap dish
"Big Spender" soap dispenser
"K-Box" tissue box



"Round up" glass container with lid
"Big Spender Circle" soap dispenser
"Round up" glass cup
"Grace" soap dispenser

Industry designer Philipp Aduatz creates functional items that are sculptural by nature. Here, he explains how a long-term collaboration came about as a result of attempting to define a piece of bathroom furniture as a work of art, and why the KLOMFAR bathroom accessories are one thing above all else: minimalist and elegant.



What relationship do you have with your bathroom?

A very good one, and one that's growing more intense! In my apartment in Vienna, I have a rather small bathroom, but it's very well equipped, including the prototype from a range I've designed for KLOMFAR. In my house in Upper Austria, I'm able to enjoy a really spacious bathroom featuring natural stone. Through my collaboration with Martin Klomfar, my awareness of the beauty of bathrooms has increased even further. After all, the bathroom is of course much more than a place where you go about your daily grooming – it's a space for experiences, where you can express your personality in a really poetic way.

How have bathrooms changed in accordance with people's demands?

The size has changed a lot. Even though you can of course create a great bathroom in a small space, it's evident from floor plans that people want to really stretch out in their bathroom, and for that they want space. It comes down to the fact that a bathroom is no longer a purely functional room – it's a living space that people spend a lot of time in. Over the past decades, a dramatic shift has taken place and bathrooms have become a world of their own. That's something that's very visible at KLOMFAR.

Are you one of those people who spends a lot of time in the bathroom?

I definitely spend a lot more time in there since becoming a father. I've installed a corner bath by EOS for Duravit at my house in Upper Austria. It's great. I can have a bath with my son and my wife in there. Spending time together in the bathroom is a luxury, and not just for me.

What's aesthetically pleasing about a bathroom, in your opinion?

For me, it's the simple and reduced shapes and an elegant minimalism. The materials also characterise the space, starting with the tiles or natural stone, moving on to the fittings and then the bathroom accessories. Lighting, which is often provided by a central LED mirror, makes a huge contribution to the atmosphere in the bathroom. The harmony between the chosen accessories and a consistent style turns the bathroom into just as much of a place for relaxation as the living room. To achieve the perfect result, it's important to get good advice.

Which accessories shape the style of your bathroom?

The Big Spender is definitely one of my favourite items. I have one in chrome and one in powder coated white. But I would like it best in copper if it already had some patina. I used to like everything all perfect and shiny, but now I much prefer things with small imperfections, as that has its own appeal.

Big Spender, like many other items in the range of KLOMFAR bathroom accessories, is available in several finishes. How does the material change the character of an object?

It's really important, because the material is critical in defining the essence of an object. No matter whether the surface is rough or shiny, polished or matt, it says something about the object. Is it elegant, rather crude or almost ancient-looking? You touch the soap dispenser, the soap dish and the tissue box with your hands and feel them, and you see them up close. The Aquawave range creates a wonderful contrast with minimalist objects.

How would you describe your design for KLOMFAR?

My design for KLOMFAR is reduced, minimalist and elegant. It's about very straightforward,





simple shapes that are brought to life with great accuracy at a factory in Barcelona. You could say that any ornamentation could be taken away to create a harmonious object, but it's about reducing things to the bare essentials.

You can see all of that in the Big Spender, in particular. So why is the Big Spender so big?

Because it's a practical feature that it can hold so much soap, but also because it's a signature piece that should draw the attention in the bathroom. That's where the size really comes into play.

Your artistic works are oriented more towards sculpture. How does that fit with the minimalism exhibited by KLOMFAR?

When I was studying, my role models were Richard Serra, Constantin Brâncuși, Tony Cragg and Henry Moore. They were all sculptors and had a greater influence on me as a product designer. But there are also designers who use the principles of sculpture in product design such as Ron Arad. That was my inspiration. In the range for KLOMFAR, I was able to make use of everything I'd learned about how sculpture works, so the understanding of shape and proportion that's required for really simple shapes like cubes or cylinders. I also went to the University of Applied Arts in Vienna every semester to do life drawing. I wasn't very good at it, nor did I really like it, but it helped me learn about proportion.

The route to minimalism also led you to sculpture as part of your collaboration with Martin Klomfar, and you developed the Aquawave range of furniture.

Exactly, it all started with the almost artistic Aquawave range of items. For this work, I was inspired by the structure of waves, and the result was sculptural bathroom furniture that's made to order. It's very complex to make, but it's a great contrast with the minimalism that prevails in the bathroom.

Technology and innovation are topics that you deal with a lot.

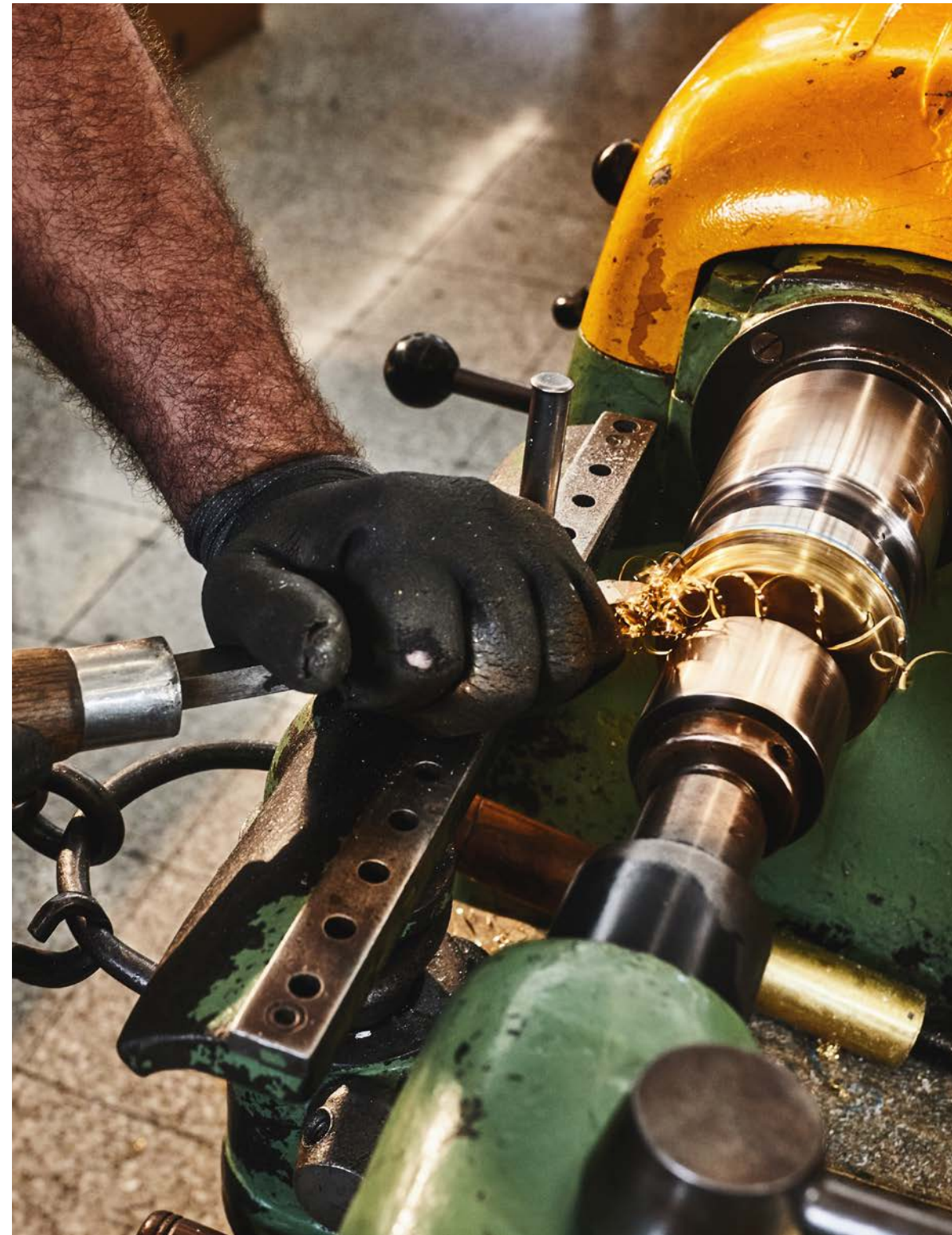
Yes, absolutely. But I would also say the development of materials takes centre stage in my work with KLOMFAR. Materials are really important to Martin Klomfar and I, and we talk about them constantly. KLOMFAR offers many different finishes and that's what makes it really interesting for customers, because it's almost impossible not to find something you like.

How does the collaboration between you and Martin Klomfar work?

Martin Klomfar is very good at articulating what he's envisaging. Constructing models is very important in our collaboration. I made Martin a kind of kit for that with lots of different pump attachments made out of painted wood. That way he can play around with them. It's fun working like that because we have something we can touch and can easily represent the proportions.

In your own work, you position yourself between design and art. What makes this intersection so interesting?

I come from an artistic family, so it was always too little to me to "just" do product design. For me, technology and materials are lacking in art. Depending on which angle you look at an object from, it can be either art or design, and it's this concurrence that gives the object an additional dimension.



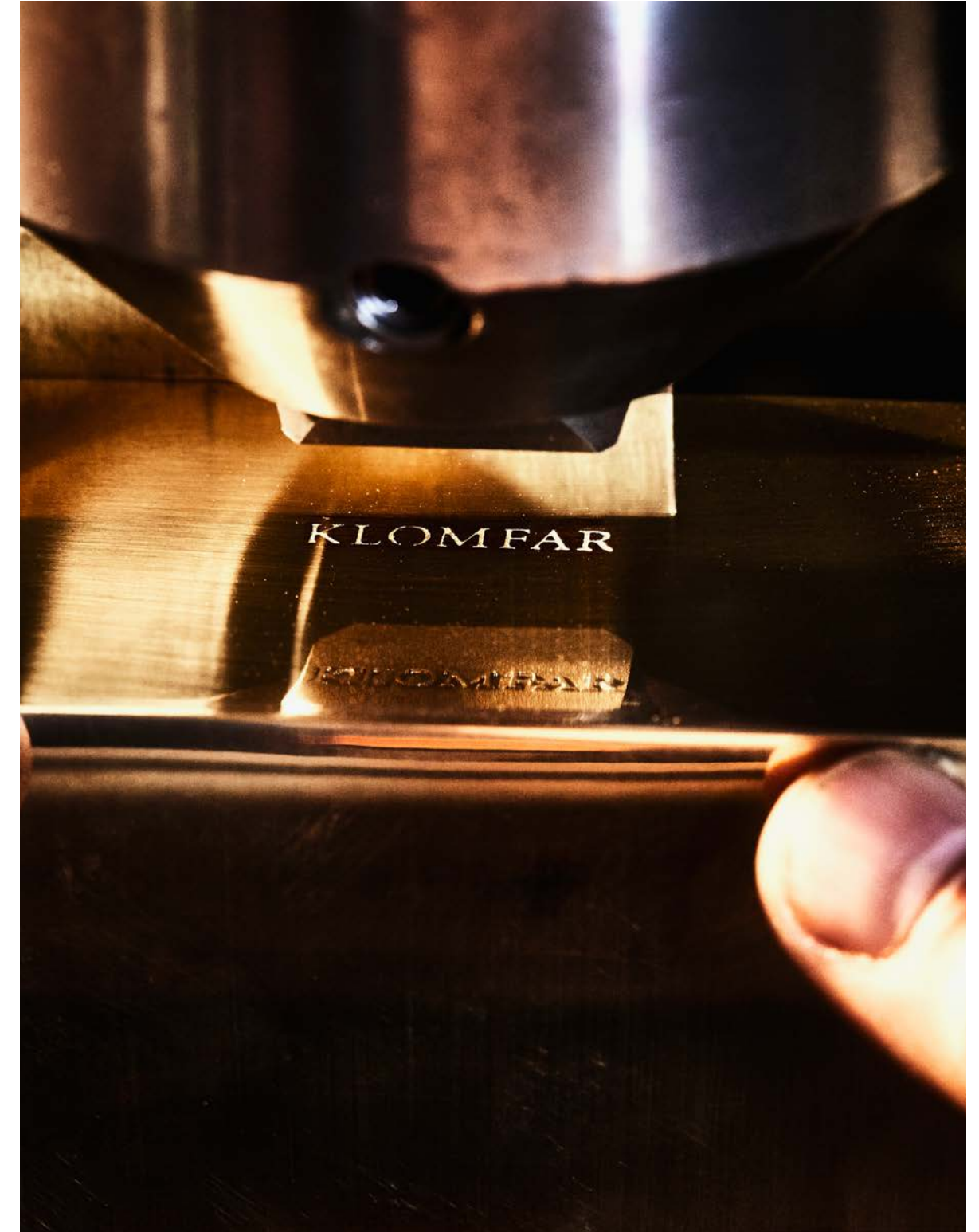
All KLOMFAR accessories are made predominantly by hand using traditional artisanal techniques. Collaboration with exclusively European partners meet the most demanding requirements in terms of quality and ensure the sustainability of the products.



For decades, Alfonso has specialised in turning materials into objects with character. His experience can be seen and felt in every product made. The individual components of the soap dish are joined together using a brazing process. The factory in Spain amazes time and again with its manual skills and expert precision.



Surfaces protect and shape our products. They turn raw brass products into refined objects. The designer items are finished with chrome, gold, nickel and copper plating. That serves as protection just as much as providing the perfect surface finish.



The KLOMFAR name is imprinted on each of our pieces as a sign of premium quality. In doing so, our name vouches for the value and durability of the product.



Every single object made by KLOMFAR is carefully made by hand. Depending on the model, up to 36 production steps are required. Only then can we achieve the necessary quality and very particular feel that our customers sense with their own hands – day after day, for generations.

For us, the bathroom is a place where we can enjoy the most basic of joys in life to the full. In the physical space, everything revolves around relationships and touch. That's why we place great emphasis on the premium quality of materials and the manufacturing of our products. As a family business with a long history, we've been able to nurture a close relationship with our customers since 1960. We feel obligated to manufacture long-lasting products that are made in Europe by hand and under fair conditions. That was one reason why we evolved from a simple retailer into a manufacturer. In doing so, our idea of elegant, functional and minimalist design also played a role that would only be possible in our own line of products. The balance between timelessly beautiful appeal and uncompromising functionality – that's where the attraction of KLOMFAR accessories lies.

KLOMFAR is therefore now a design company with a flourishing e-commerce website, a traditional retail location in the first district of Vienna and a specialist in exclusive bathroom accessories. We strive every day to create luxury, homely bathrooms with individual character. We offer made-to-measure items, exclusive designs and consult on planning based on our many decades of experience. And we love being in contact with you!





KLOMFAR is able to draw on many decades of experience in the planning and installation of beautiful bathrooms. We offer our partners professional advice based on our depth of product and market knowledge, which is just as extensive as our installation expertise. We support interior designers, craftsmen and wholesalers in the purchase of refined and functional bathroom accessories, create custom solutions for them with inspiring shapes and can also make the KLOMFAR luxury range with bespoke finishes for large projects. That means professionals can choose from a comprehensive range and work with individually adapted, premium products that shape the character and quality of a bathroom design.



"Stack it" square soap dish
Chrome-plated brass
Small 7.5 × 7.5 cm
Medium 10 × 10 cm
Large 11.5 × 11.5 cm



"Stack it" round soap dish
Chrome-plated brass
Small Ø7.7 cm
Medium Ø11.2 cm
Large Ø13.6 cm



"Big Spender" soap dispenser
Chrome-plated brass, free-standing or wall-mounted
W10 × D6 × H15.6 cm



"Round up" glass container
Chrome-plated brass, clear glass
Small Ø7 × H9 cm + 2 cm handle
Medium Ø7.7 × H10 cm + 3 cm handle
Large Ø9.5 × H12.5 cm + 4 cm handle



"Round up" brass container
Chrome-plated brass
Small Ø7 × H8 cm + 2 cm handle
Medium Ø8 × H10 cm + 3 cm handle
Large Ø10 × H13 cm + 4 cm handle



"Round up" glass cup
Chrome-plated brass, satin glass
Small Ø7.7 × H10.2 cm
Large Ø9.5 × H12.5 cm



"Big Spender Circle" soap dispenser
Chrome-plated brass, free-standing or wall-mounted
Medium Ø70 × H16.5 cm
Large Ø80 × H16.5 cm



"Big Spender Junior" soap dispenser
Chrome-plated brass
W5 × D5 × H14 cm



"Big Spender Junior" soap dispenser
Chrome-plated brass, satin glass
W5.3 × D5.3 × H15 cm



"Round up" glass cup
Chrome-plated brass, clear glass
Small Ø8 × H10.2 cm
Large Ø10.5 × H12.5 cm



"Solid" wastebasket
Polished stainless steel, without lid
Small Ø20 × H21 cm
Medium Ø20 × H32 cm



"Solid" wastebasket
Polished stainless steel, with lid
Small Ø20 × H21 cm + 2 cm handle
Medium Ø20 × H33 cm + 2 cm handle



"Satin" soap dispenser
Chrome-plated brass, satin glass
Ø6.5 × H17 cm



"Grace" soap dispenser
Chrome-plated brass
Ø5 × H14 cm



"Round up" glass container
Chrome-plated brass, satin glass
Small Ø7 × H9 cm + 2 cm handle
Medium Ø7.7 × H10 cm + 3 cm handle
Large Ø9.5 × H12.5 cm + 4 cm handle



"Solid" wastebasket
Polished stainless steel, with swing lid
Small Ø20 × H21 cm
Medium Ø20 × H33 cm



"Pin" wastebasket/guest towel container
Polished stainless steel, without lid
Small Ø20 × H21 cm
Medium Ø20 × H33 cm



"Pin" wastebasket/guest towel container
Polished stainless steel, with lid
Small Ø20 × H21 cm + 2 cm handle
Medium Ø20 × H33 cm + 2 cm handle

Overview of bathroom accessories (available in six different finishes)



"Pin" wastebasket/guest towel container
Polished stainless steel, with swing lid
Small Ø20 × H21 cm
Medium Ø20 × H33 cm



"Pin" waste-/laundry basket
Polished stainless steel, without lid
Small Ø31 × H47 cm
Medium Ø35 × H50 cm



"Pin" waste-/laundry basket
Polished stainless steel, with lid
Small Ø31 × H47 cm + 2 cm handle
Medium Ø35 × H50 cm + 2 cm handle



"Pin" bathroom stool/laundry basket
Polished stainless steel, with seat lid
Ø31 × H50 cm



"Stand up" vanity mirror
Chrome-plated brass, adjustable height, with 3x or 5x magnification
Small Ø16.5 × H 34 – 43 cm
Medium Ø18.5 × H 41 – 51 cm



"K-Box" tissue box
Chrome-plated brass, free-standing and wall-mounted
W24.7 × D13.4 × H7.5 cm



"Brush up" toilet brush set
Chrome-plated brass
Ø8 × H36 cm



"Brush n' roll" toilet paper holder and brush set
Chrome-plated brass
Brush: 38cm, Stand: 66,5cm, Base: 16 × 12cm

Overview of finishes



Chrome-plated brass



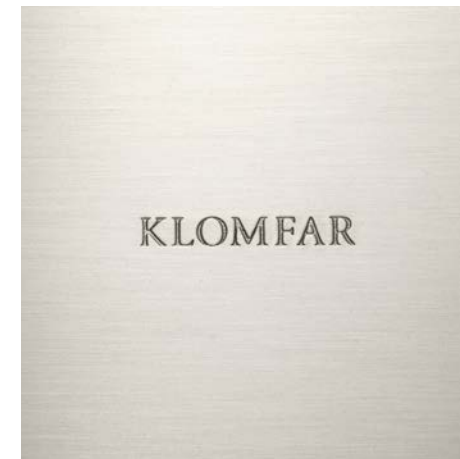
Gold-plated brass



Matt white



Matt black



Satin nickel



Copper-plated brass

Imprint

KLOMFAR GmbH
Naglergasse 25
1010 Vienna, Austria

+43 1 533 12 09
verkauf@klomfar.at
www.klomfar.at

Media owner and publisher:
KLOMFAR GmbH
Naglergasse 25
1010 Vienna, Austria

Concept, text and design:
Magistris, www.magistris.at

Photography:
AR Visual Ltd. (p. 4, p. 54)
Klaus Fritsch (p. 39, p. 42, p. 56–p. 67)
Mark Glassner (p. 1, p. 6–p. 37, p. 70)
Philipp Jelenska (p. 44–p. 53)
Klaus Vyhnalek (p. 41)



Naglergasse 25
1010 Vienna, Austria

Shop online:
klomfar.at